



# Little Leaders Exclusive KLERKSDORP

From Babies  
to Grade RR



084 250 0621 | 082 555 4293  
38 Ian Street | Klerksdorp  
[www.littleleaders.co.za](http://www.littleleaders.co.za)  
[financeslittleleaders@gmail.com](mailto:financeslittleleaders@gmail.com)



Don't hesitate to contact  
us for any further information



# We Focus on



## Child Uniqueness:

We understand the child is an individual, unique learner who is capable, confident and resilient.

## Growing Positive Relations:

Little Leaders children learn to grow an independent, positive relation from a loving base and secure relationship with parent and teacher.

## Learning and Development:

All individuals learn at different levels and at a different pace, all our developmental areas are equally important and are interconnected.

## Environmental Factors:

The playground is our learn through play development x-factor and stimulates the important senses.

**Early Childhood Development Areas:** Our preschool curriculum is designed with early learning and development areas (ELDA's) and we follow the national framework CAPS.

### **Physical Development:**

Health and safety  
Gross Motor development  
Fine Motor development

### **Performing Arts:**

Music and movement  
Acro-Fusion  
Gym

### **Communication:**

Listen and understand  
Speak and communication  
Interactive Smart Learning

### **Outdoor Environment:**

Trampoline Park  
Modern outdoor play equipment  
Shade netting covered play areas

### **Creativity:**

Daily life and play  
Art Classes  
Little Chef creative cooking

### **The World is our oyster:**

Exploring and gaining knowledge  
Inquiry and understanding  
Executive Functioning



## **Quick Facts:**

Language: Afrikaans and English  
Ages: 4 months to 6 years  
Class size: Controlled class size

School times from Monday - Friday  
Full day: 07:00-17:30  
Early bird drop off: 06:40  
Regretfully no half day options.



## **THE DAILY PROGRAM:**

- Morning Ring
- Theme Introduction
- Creativity Activity
- Music/Computer Class
- Free Play
- Movement Development
- Story Time
- Nap Time
- Perceptual & Sensory Play





# Extramural Activities

Offered by private tutors/teachers/coaches  
held on Little Leaders Exclusive premises include:



## Acro Fusion



Stretch and dance

## Dance & Movement class



Get active

## Gymbaroo



LET'S HAVE FUN

## Swimming



Splish Splash

## Little Chef classes



Yum, Yum, Yum!

## Ballet



Tippy Toes!

## Princess Curriculum



Little Ladies!

## Mini Gym



Fit & Fabulous

## Sportnetics



Slam Dunk!



## Week 1

### MONDAY

Breakfast: Yoghurt & wholewheat toast  
Lunch: Macaroni and a dash of cheese  
Snack: Mixed sandwiches and crisps

### TUESDAY

Breakfast: Oats with a hint of honey  
Lunch: Curry and Rice  
Snack: Biscuits and Fruit

### WEDNESDAY

Breakfast: Scrambled eggs & toast  
Lunch: Sausage and mash with gravy  
Snack: Frozen yoghurt and fruit

### THURSDAY

Breakfast: Maize porridge with butter and sugar  
Lunch: Cocktail sausages and fries  
Snack: Mixed sandwiches and crisps

### FRIDAY

Breakfast: French toast with butter and syrup  
Lunch: Burgers  
Snack: Jelly and Fruit



## Week 2

### MONDAY

Breakfast: Yoghurt & wholewheat toast  
Lunch: Spaghetti Bolognaise  
Snack: Mixed sandwiches and crisps

### TUESDAY

Breakfast: Emoji Flapjacks with banana  
Lunch: Chicken breast with rice & veggies  
Snack: Biscuits and Fruit

### WEDNESDAY

Breakfast: Omelette and cheese  
Lunch: Meatballs with rice and vegetables  
Snack: Frozen yoghurt and fruit

### THURSDAY

Breakfast: Maize porridge with butter and sugar  
Lunch: Fish pops & fries  
Snack: Mixed sandwiches and crisps

### FRIDAY

Breakfast: French toast with butter and syrup  
Lunch: Burgers  
Snack: Jelly and Fruit



## Week 3

### MONDAY

Breakfast: Yoghurt & wholewheat toast  
Lunch: Chicken nuggets & fries  
Snack: Mixed sandwiches and crisps

### TUESDAY

Breakfast: Oats with a hint of honey  
Lunch: Curry and Rice  
Snack: Biscuits and Fruit

### WEDNESDAY

Breakfast: Scrambled eggs & toast  
Lunch: Sausage and mash with gravy  
Snack: Frozen yoghurt and fruit

### THURSDAY

Breakfast: Maize porridge with butter and sugar  
Lunch: Cocktail sausages and fries  
Snack: Mixed sandwiches and crisps

### FRIDAY

Breakfast: French toast with butter and syrup  
Lunch: Sausage rolls and spaghetti salad  
Snack: Jelly and Fruit



## Week 4

### MONDAY

Breakfast: Cereal & warm milk  
Lunch: Shoelace sausages and spaghetti with a tomato-based sauce  
Snack: Mixed sandwiches and crisps

### TUESDAY

Breakfast: Emoji Flapjacks with banana  
Lunch: Chicken breast with rice & veggies  
Snack: Biscuits and Fruit

### WEDNESDAY

Breakfast: Omelette and cheese  
Lunch: Meatballs with rice and vegetables  
Snack: Frozen yoghurt and fruit

### THURSDAY

Breakfast: Maize porridge with butter and sugar  
Lunch: Fish fingers & fries  
Snack: Mixed sandwiches and crisps

### FRIDAY

Breakfast: French toast with butter and syrup  
Lunch: Hot dogs  
Snack: Ice cream and wafers





# Baby Land!

GENTLE, LOVING AND EXPERIENCED BABY CARE

Welcome to Little Leaders Exclusive Baby Land, Our dedicated team of caregivers is committed to fostering growth in every aspect—physical, emotional, social, and cognitive in a modern safe environment.

Focused on Holistic Development

Modern Classes  
Camera Systems  
Baby Stimulation  
Monthly Milestone  
Tummy Time  
Music & Outside Play

Afrikaans & English  
4-18 Months



# SCHOOL FEES

Please find below the information regarding your child's enrolment for Little Leaders 2026 and the associated fees. The fee structure for 2026 is as follows:

## NON-REFUNDABLE ENROLMENT FEE PAYABLE ON REGISTRATION OF APPLICATION

Admin & Registration fee (once - off) for Current Students R 700.00 Due BEFORE 30 NOVEMBER	(Includes School Communication app plus book fees for the year- Non refundable Applicable 1-2 years - 4-5 years
Admin & Registration fee (once - off) New Students R 1000.00 Due BEFORE 30 NOVEMBER	(Includes School T-shirt, Acro set School, Communication app, Dancemouse joining fee for the year & book fees for the year) - Non refundable Applicable 1-2 years - 4-5 years
Babyland only admin & registration fee (once-off) R 1000.00 Due BEFORE 30 NOVEMBER	Includes Communication app, Baby blanket or burp-cloth or diaper bag depending on availability

## SCHOOL FEES PAYABLE OVER 12 Months

Grade/ Age	Monthly Fee January - December	Total for the year	Annual Payment Payable before 31 January 2026
Babaland	R2 850.00	R34,200.00	R32 90.00
1-2	R2 900.00	R34 800.00	R33 060.00
2-3	R2 980.00	R34 800.00	R33 972.00
3-4	R2 980.00	R34 800.00	R33 972.00
4-5	R2 980.00	R34 800.00	R33 972.00

## OTHER FEES

Service	Fee	Optional/Compulsory
School Dry-mac with fleece	R 300.00	Optional
Ballet Leotard with skirt (Excl shoes) - Girls Only 1-2 years - 4-5 years	R 300.00	Compulsory
Swim ( 2 x classes week with qualified swim SA coaches - heated pool)	R450.00 per month	Optional

If you are new to Little Leaders a non-refundable registration fee is payable to secure your 2026 place. Should you cancel after 30 November 2025, a full month's notice fee will be charged.



# Monthly Necessities



## Class 1-2:

2 x 1 Liter long life milk  
2 x Pack wet wipes  
1 x 750ml Dettol/Savlon

## Class 2-3 Years:

2 x 1 Liter long life milk  
1 x Pack wet wipes  
1 x 750ml Dettol/Savlon  
1 x Box tissues

## Class 3-4 Years:

2 x 1 Liter long life milk  
1 x Pack wet wipes  
1 x Liquid Hand Soap  
1 x Box tissues

## Class 4-5 Years:

2 x 1 Liter long life milk  
1 x Pack wet wipes  
1 x Box tissues  
1 x Hand sanitizer

### Payment methods

Method 1	Annual payment in advance, due by 31 January 2026.
Method 2	Internet payments, due monthly in advance on or before the 7th day of each month x 12months.
Method 3	Cash payment by teacher before the 7th day of each month x 12 months

### Bank details

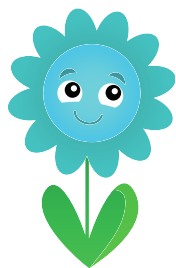
Name of account: Little Leaders Exclusive  
Bank: FNB- Cheque account  
Account number: 62840080832  
Branche code: 250053

All payment references must be according to allocated reference code provided after enrolment

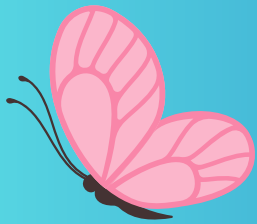
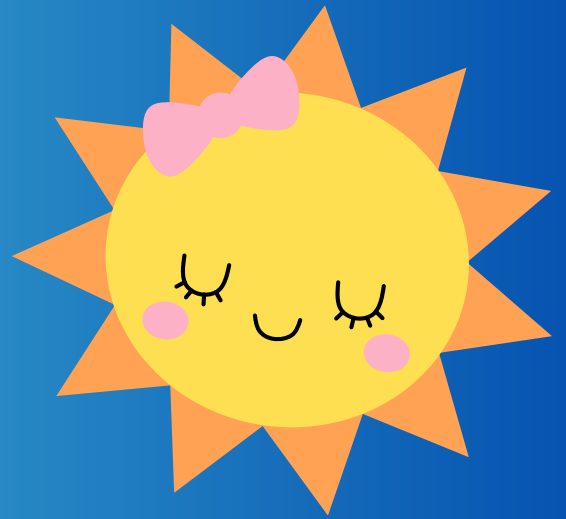
Should you be uncertain about anything in this letter, please contact the school by email at - [financeslittleleaders@gmail.com](mailto:financeslittleleaders@gmail.com)

We thank you for your continued support and for selecting Little Leaders as your school of choice. We look forward to welcoming you and your child/children to the school. We believe 2026 will be a successful school year for us all.

Kind regards  
Bonita vd Westhuizen  
Head of Little Leaders Exclusive







Private Pre-school  
Nurturing our Future Leaders

